



ShelterCluster.org

Coordinating Humanitarian Shelter

**REACH** Informing  
more effective  
humanitarian action

# INTER AGENCY SHELTER CLUSTER ASSESSMENTS



I – Introduction

II – Case Study #1

III - Case Study #2

# Introduction

Most clusters (including shelter) use to inform sectoral planning without a capacity to effectively collect, analyze and use key information.

Such **information gaps** were (and are) a major shortcoming in the Humanitarian Reform, directly impacting humanitarian effectiveness

The shortcomings were mainly due to 2 **reasons**:

- Lack of capacity (human, tools and methodology) in clusters
- Interagency information collection not a priority for operational agencies (notably NGOs)

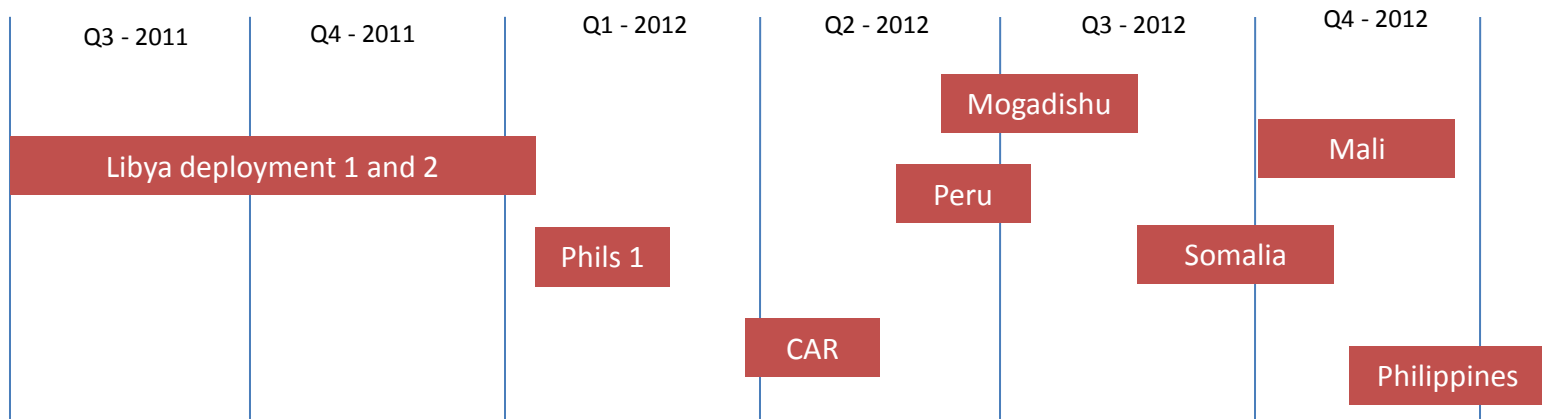
REACH through its partnership with the Global Shelter Cluster, and with the support of DG ECHO, contribute to the above gaps:

- Provision of **dedicated resources** to facilitate interagency data collection and analysis as a cluster. Availability of resources promote the engagement of other agencies
- **Promote the cluster's capacity** to develop data gathering and analysis tools and capitalize on lessons learnt of deployments

The **first deployment** of REACH was in the summer 2010 in Kyrgyzstan, in partnership with the UNHCR-led shelter cluster.

Following the success of the Kgz intervention, it was decided to replicate and expand the **partnership with the GSC. ECHO** provided the first institutional funding to facilitate this.

# Overview of GSC REACH deployments



**Natural disasters** (IFRC cluster lead): Completed in Philippines (2), Peru

**Complex disasters** (UNHCR cluster lead): Completed CAR, Somalia (2) and Mali

# Case Study #1 Sudden Onset Natural Disaster

## Philippines – Typhoon Bopha – December 2012



ShelterCluster.org  
Coordinating Humanitarian Shelter

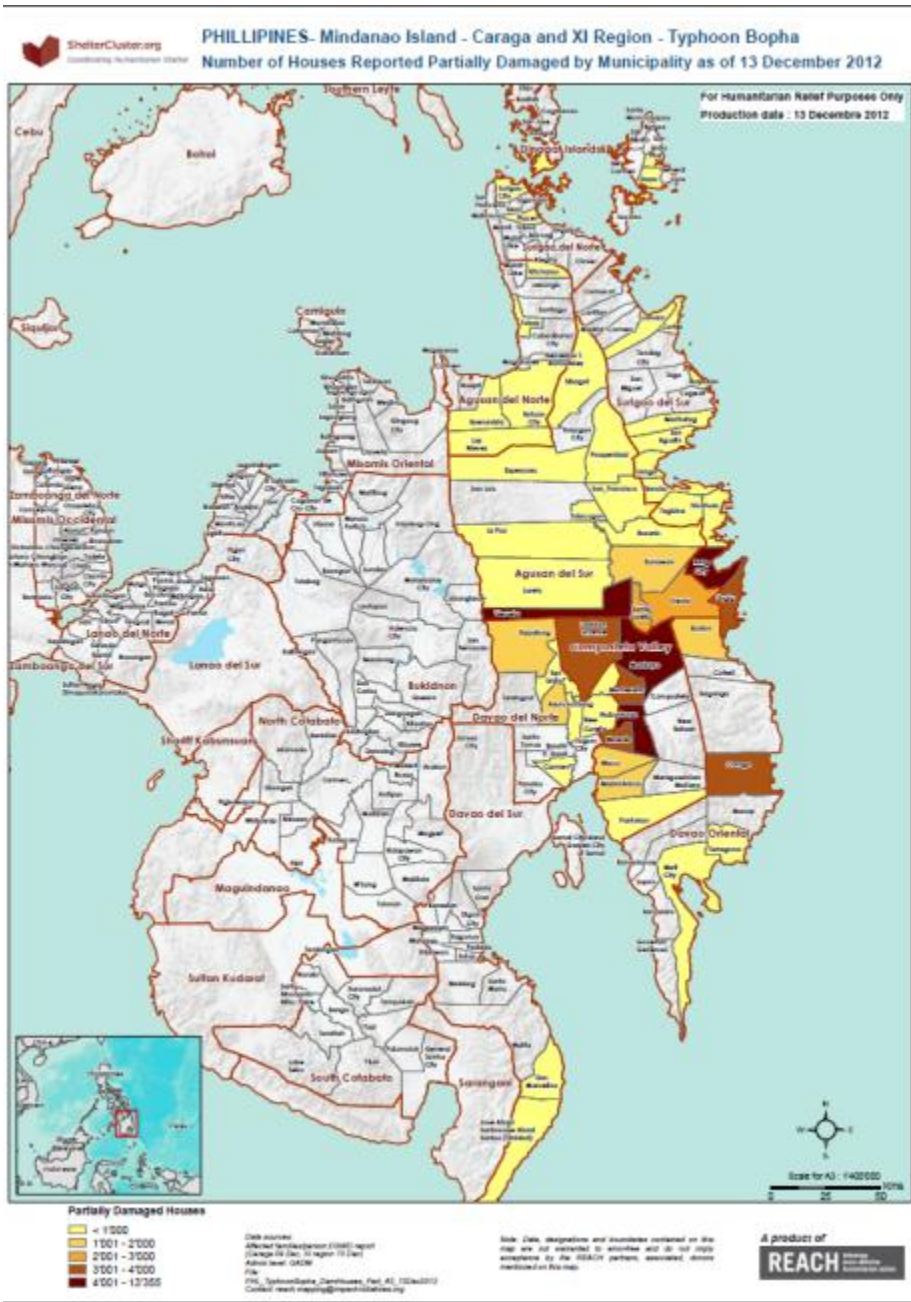
**REACH** Informing  
more effective  
humanitarian action

## Philippines Typhoon Bopha

- On 4th of December, Typhoon Bopha (locally known as Pablo) hits the Philippines.
- Heaviest hit are Davao Oriental and Compostela Valley of Mindanao island in the South
  - 268,738 families or 1,152,789 individuals were affected across all regions, 46,831 totally destroyed houses
- On Jan 5<sup>th</sup> the GSC calls REACH to lead and facilitate a shelter assessment in order to inform revised flash appeal. The REACH team leader arrives in Manila on Jan 6<sup>th</sup>, joined by GIS/DB focal person on Jan 7<sup>th</sup> in Davao City

## Philippines: Key outputs

- Interagency field assessment (3 agencies) conducted between Dec 10<sup>th</sup> – Dec 21<sup>st</sup> in Davao Oriental and Compostela Valley
  - 48 volunteers; 3056 household questionnaires
  - Use of remote sensing supporting assessments
  - 3 agencies, universities contributing to field level assessment
- Two fact sheet made in course of assessment. First draft of assessment report ready on Dec 31<sup>st</sup>, feeding directly into revised flash appeal of Shelter cluster
- Static maps and interactive web-maps visualized findings



**Typhoon Pablo 2012**  
 ShelterCluster.org  
 Coordinating Humanitarian Shelter

**SHELTER CLUSTER ASSESSMENT  
 IN MINDANAO, PHILIPPINES**  
 SHELTER CLUSTER REPORT  
 FINAL ASSESSMENT REPORT  
 DECEMBER 2012



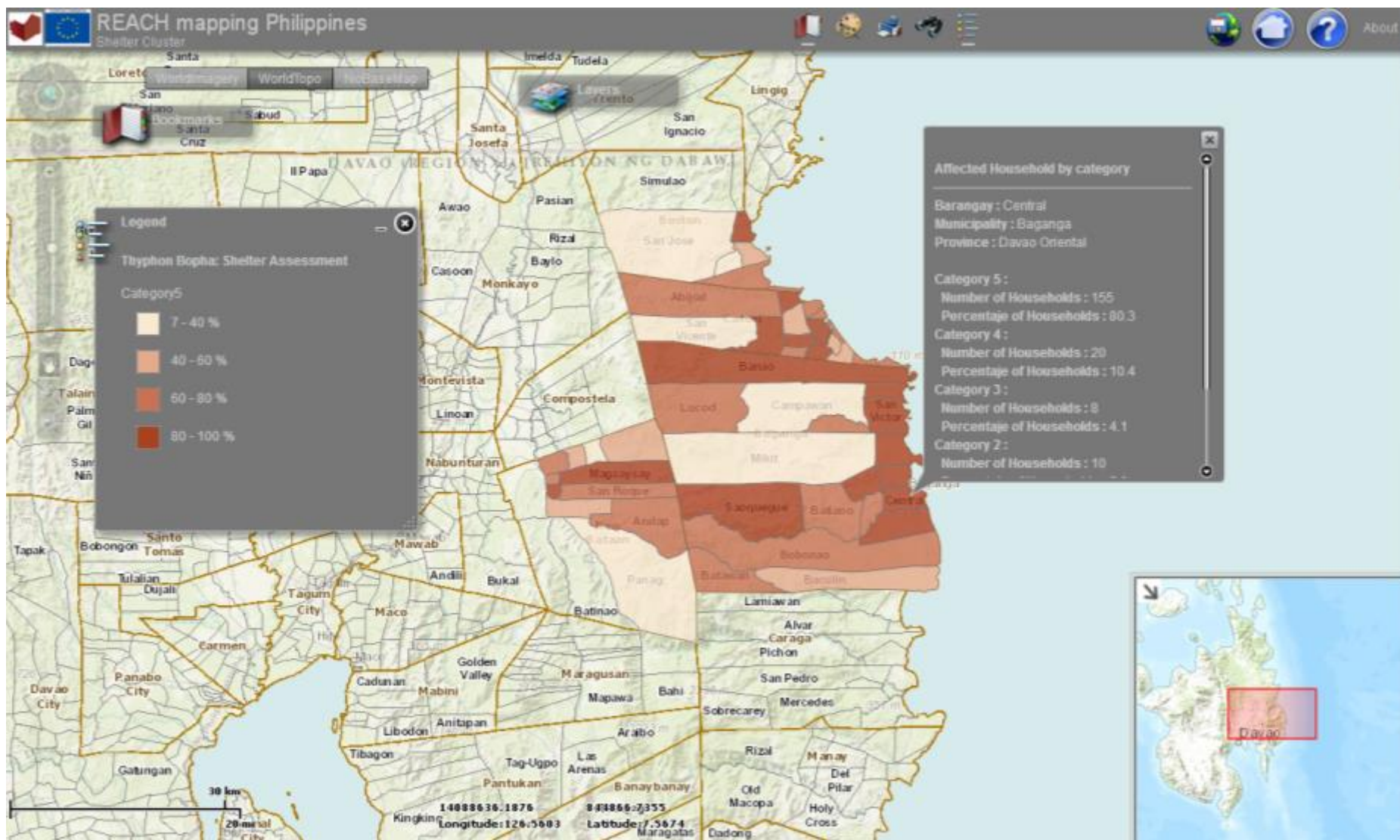
A product of  
**REACH**  
 REACH  
 REACH  
 REACH



**ShelterCluster.org**  
 Coordinating Humanitarian Shelter

**REACH** Informing  
 more effective  
 humanitarian action





# Case Study #2 Protracted Complex Emergency

Somalia – September to  
November 2012



ShelterCluster.org  
Coordinating Humanitarian Shelter

**REACH** Informing  
more effective  
humanitarian action

## Somalia Shelter Sector Review

Somalia Shelter Cluster requested a support from REACH in order to carry out a comprehensive, nation wide, shelter cluster sector review.

The purpose of this sector review was to help the cluster in prioritizing needs and intervention over the next three years and to use validated and impartial information to fundraise for shelter interventions.

The overall field data collection process took three weeks to be set up (by involving more than 10 agencies and NGOs in the process) and was completed by mid-october.

## Somalia Shelter Sector Review

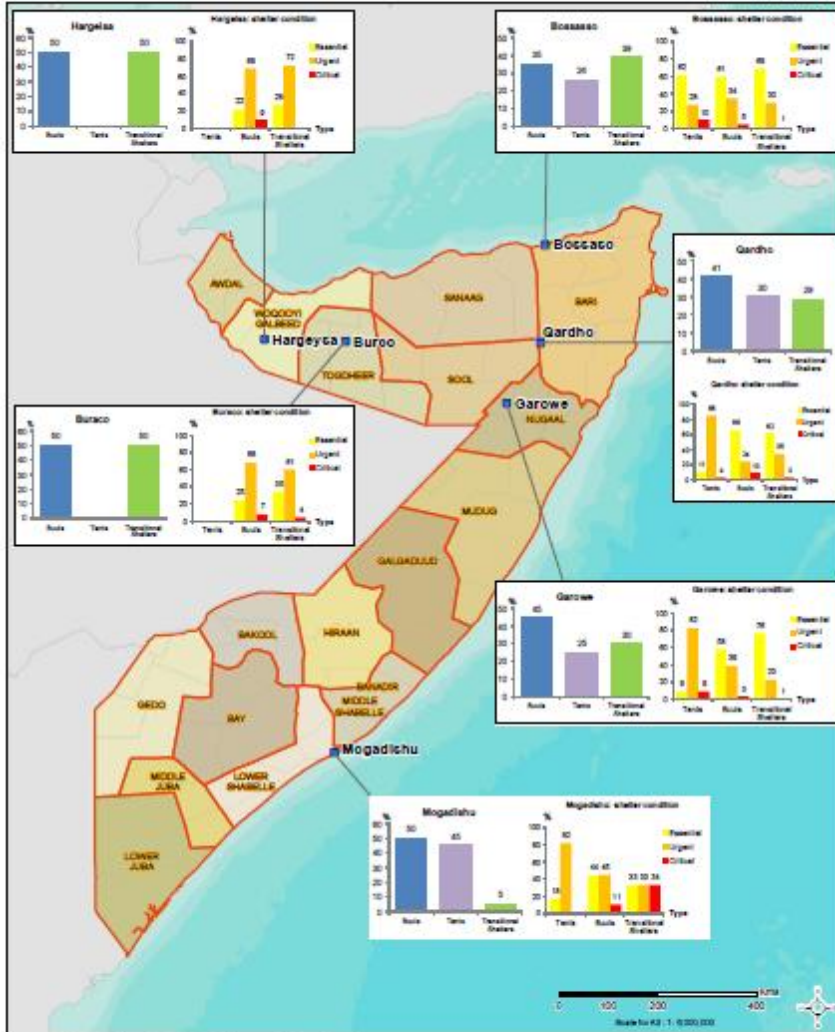
- Extensive use of **remote sensing** for settlements expansion trends and shelter counts
- 1 Global Shelter Sector Review report
- 7 Fact Sheets produced, one for each assessment location with more detailed data
- 20 **maps** and 1 interactive web-map produced
- Shelter Sector review presented by the Shelter Cluster Coordinator early January
- Shelter Cluster reports have been diffused at inter cluster and HCR level



**SOMALIA SHELTER-CLUSTER Sector Review**

Somalia IDPs Settlements: Type and condition of shelters

For humanitarian relief purposes only  
Production date: 28 January 2013



■ Cities with Assessed IDPs settlements  
□ Regional boundary

Sources:  
Shelter assessment: REACH  
Admin level: OCHA  
IDPs camp: REACH Survey, OCHA  
Folder: SOM\_IDPCamps\_A3\_08.Jan2013



Note: Data, designations and boundaries contained on this map are not warranted to exist here and do not imply acceptance by the REACH partners, associates, donors mentioned on this map

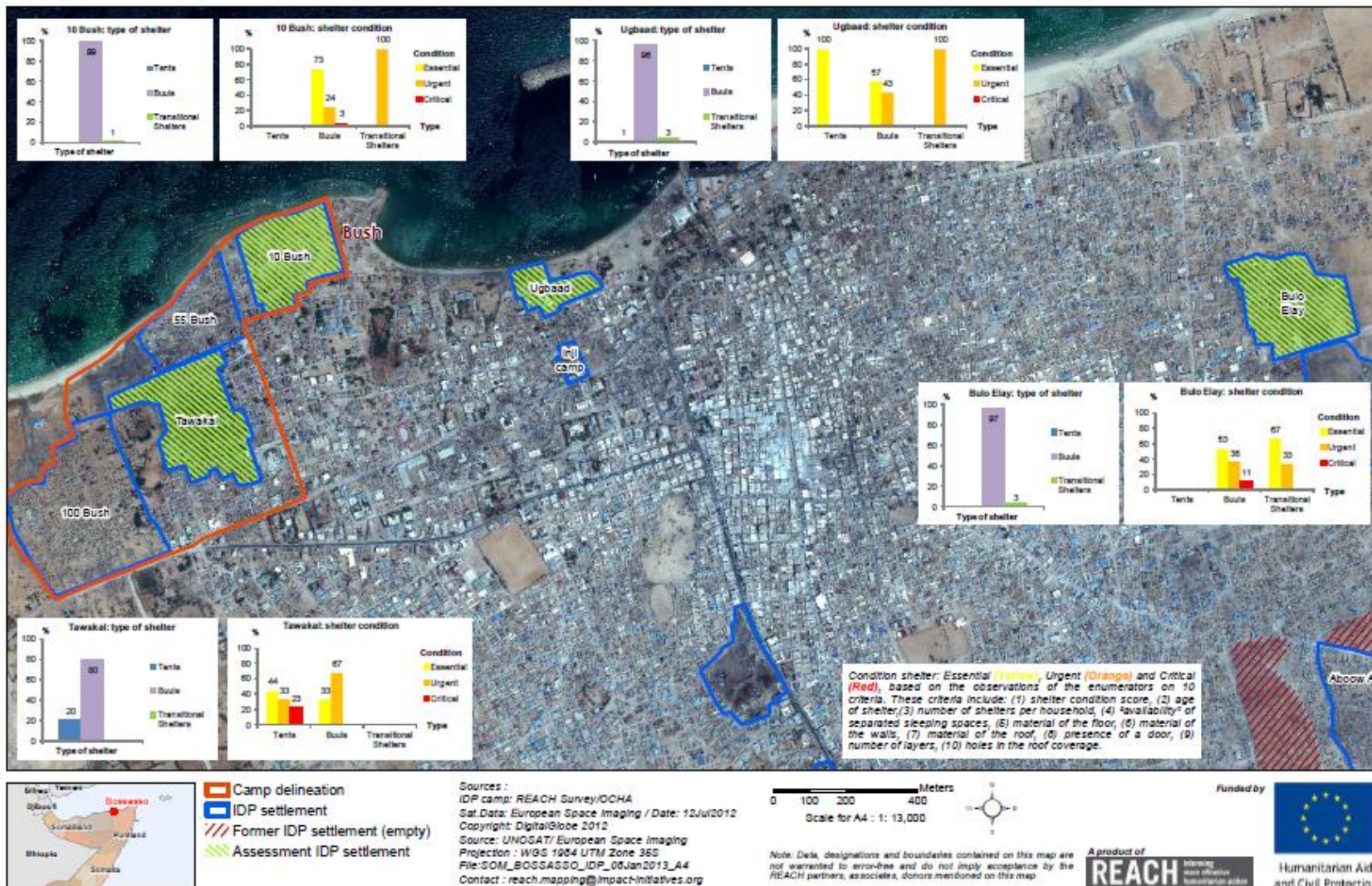




**SOMALIA SHELTER SECTOR REVIEW**  
SHELTER CLUSTER FINAL REPORT  
RAPID SHELTER ASSESSMENT  
SOMALIA, SOMALILAND & PUNTLAND  
DECEMBER 2012



A product of  
**REACH**  
Funded by  
  
Humanitarian Aid and Civil Protection



Thank You  
Questions?

[www.sheltercluster.org](http://www.sheltercluster.org) [www.reach-initiative.org](http://www.reach-initiative.org)