

SHELTER AND SETTLEMENT IN HUMANITARIAN CONTEXTS

GLOBAL ISSUES AND APPROACHES

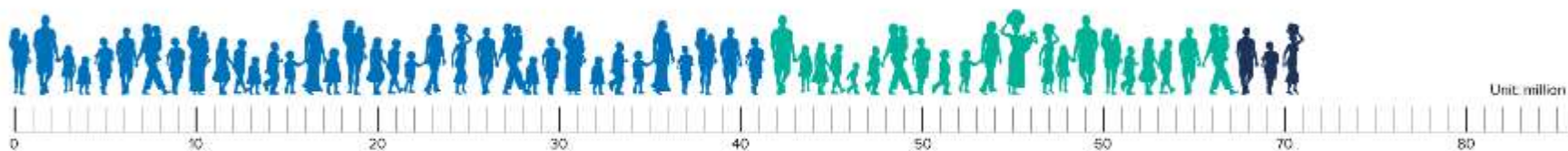
BRETT MOORE ■ HEAD OF SHELTER AND SETTLEMENTS, GLOBAL SHELTER CLUSTER CO-LEAD



London UK Shelter Forum 25.10.19

GLOBAL FORCED DISPLACEMENT CONTEXT: KEY FIGURES

70.8 million forcibly displaced people worldwide



Internally Displaced People

41.3 million

Refugees

25.9 million

20.4 million under UNHCR's mandate

5.5 million Palestinian refugees under UNRWA's mandate

Asylum-seekers

3.5 million

over half are under
the age of 18

KEY GLOBAL FIGURES

Where the world's displaced people are being hosted



About 80 per cent of refugees live in countries neighbouring their countries of origin

57% of UNHCR refugees came from three countries

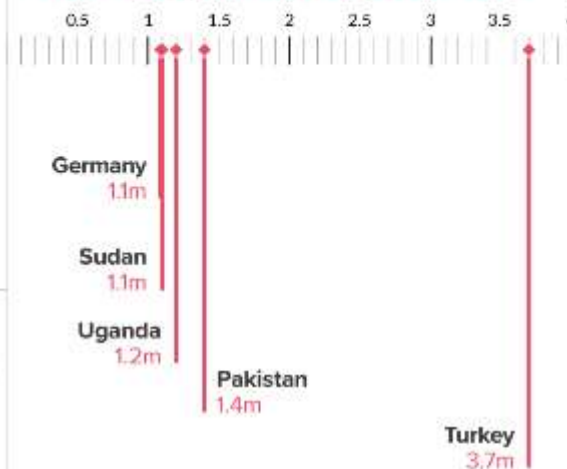


341,800
new asylum seekers

The greatest number of new asylum applications in 2018 was from Venezuelans



Top refugee-hosting countries



UNHCR has data on

3.9 million
stateless people
but there are thought to be millions more



92,400
refugees resettled

37,000 people
a day forced to flee their homes because of conflict and persecution

16,803 personnel

UNHCR employs 16,803 people worldwide
(as of 31 May 2019)

134 countries

We work in 134 countries (as of 31 May 2019)

We are funded almost entirely by voluntary contributions, with 86 per cent from governments and the European Union and 10 per cent from private donors

SOURCE: UNHCR / 19 JUNE 2019

AT LEAST

75% OF REFUGEES

LIVE IN NON-CAMP SETTINGS



UNHCR
The UN Refugee Agency



AT LEAST

54% OF REFUGEES

LIVE IN URBAN AREAS

SIDON, LEBANON



UNHCR
The UN Refugee Agency

OVER

3.6 MILLION PEOPLE

LIVE IN 690 HUMANITARIAN SETTLEMENTS

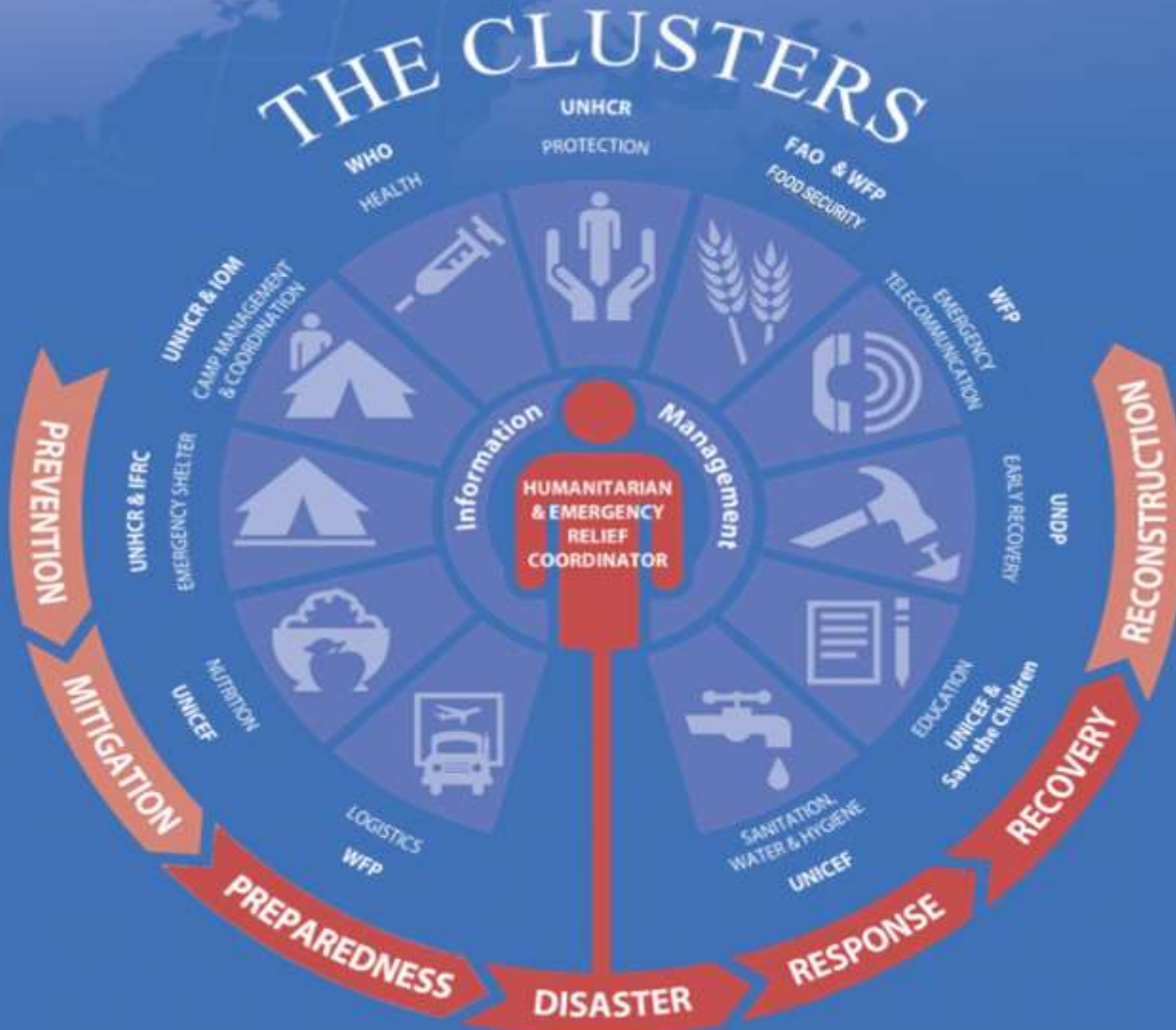
... THAT CAN LAST GENERATIONS



RESPONDING TO THE CRISIS

- Global Processes
- Technical Approaches

GLOBAL PROCESSES TO RESPOND TO CRISIS – COORDINATION MECHANISMS

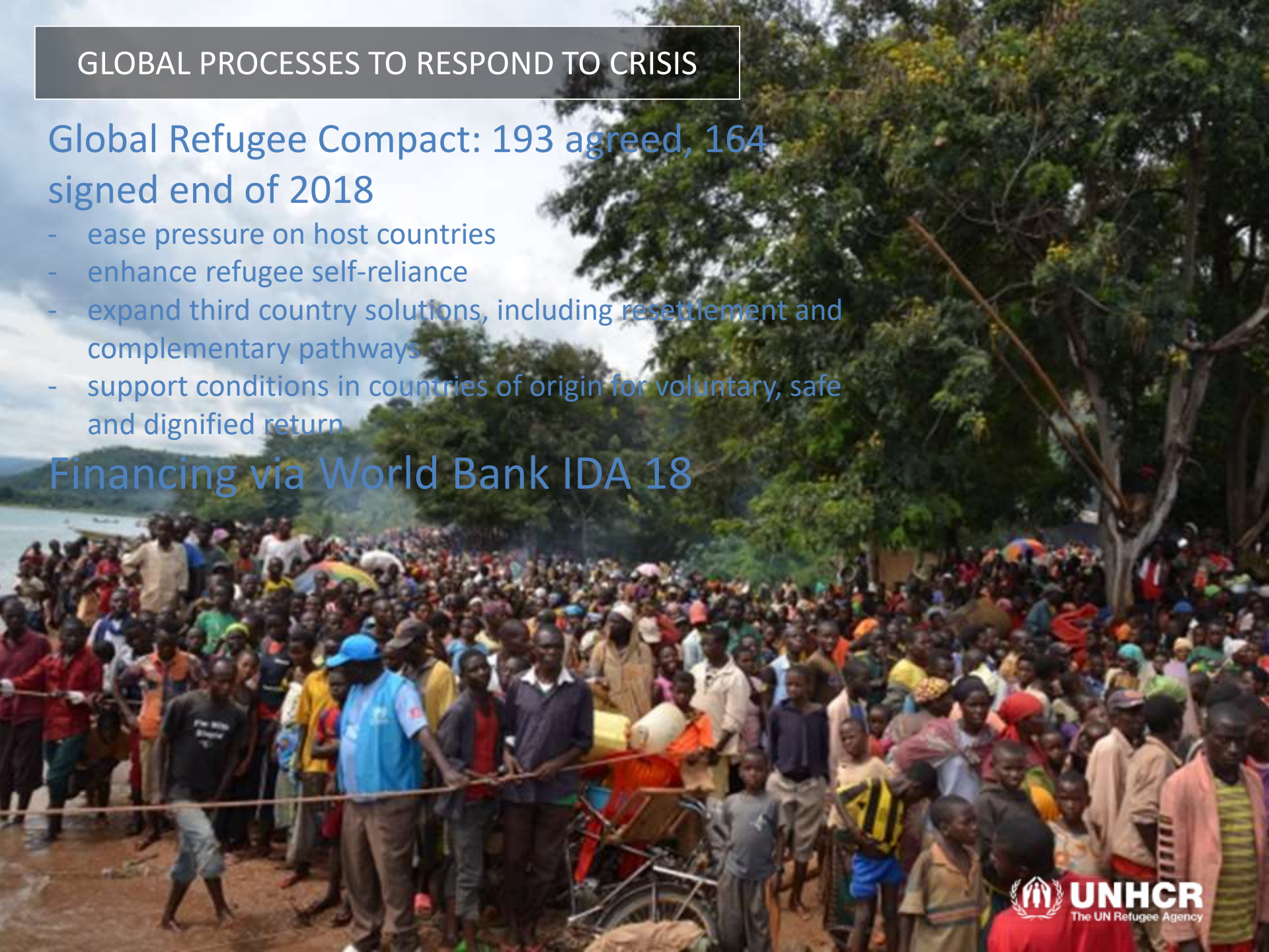


GLOBAL PROCESSES TO RESPOND TO CRISIS

Global Refugee Compact: 193 agreed, 164 signed end of 2018

- ease pressure on host countries
- enhance refugee self-reliance
- expand third country solutions, including resettlement and complementary pathways
- support conditions in countries of origin for voluntary, safe and dignified return

Financing via World Bank IDA 18



GLOBAL PROCESSES TO RESPOND TO CRISIS

Global Refugee Forum Dec 17-19th Geneva

Goal:

- Create, develop and strengthen the architecture and arrangements needed to operationalize the GCR over the longer-term
- Translate principles of increased solidarity and more equitable burden- and responsibility-sharing into concrete action
- Focus on broadening the support base and arrangements contributing to burden- and responsibility-sharing through:
 - Pledges and contributions
 - Good practices
 - Stocktaking of progress (indicators, measuring impact, tracking pledges)

Focus Areas:

- Increasing access to **education**
- Facilitating **jobs and livelihoods**
- Providing access to clean **energy** and bolstering **infrastructure (including shelter)**
- Facilitating **solutions**, increasing resettlement actors, supporting conditions for safe and dignified return, resolving longstanding protracted refugee situations
- Strengthen **protection capacity** through support for institutions, and preparedness and contingency planning

PLANNING SHELTER AND SETTLEMENT PROGRAMS

Providing emergency & lifesaving interventions

Minimising risk for conflict between host community and refugees

Favouring local integration

STRATEGIC OBJECTIVES

Can refugees be a benefit to the host community?

How can shared resources benefit **BOTH** populations as well as foster a more sustainable solution? Burden sharing and responsibility.....

CHANGING THE NARRATIVE



Somalia, 2013



Aleppo, Syria, 2016



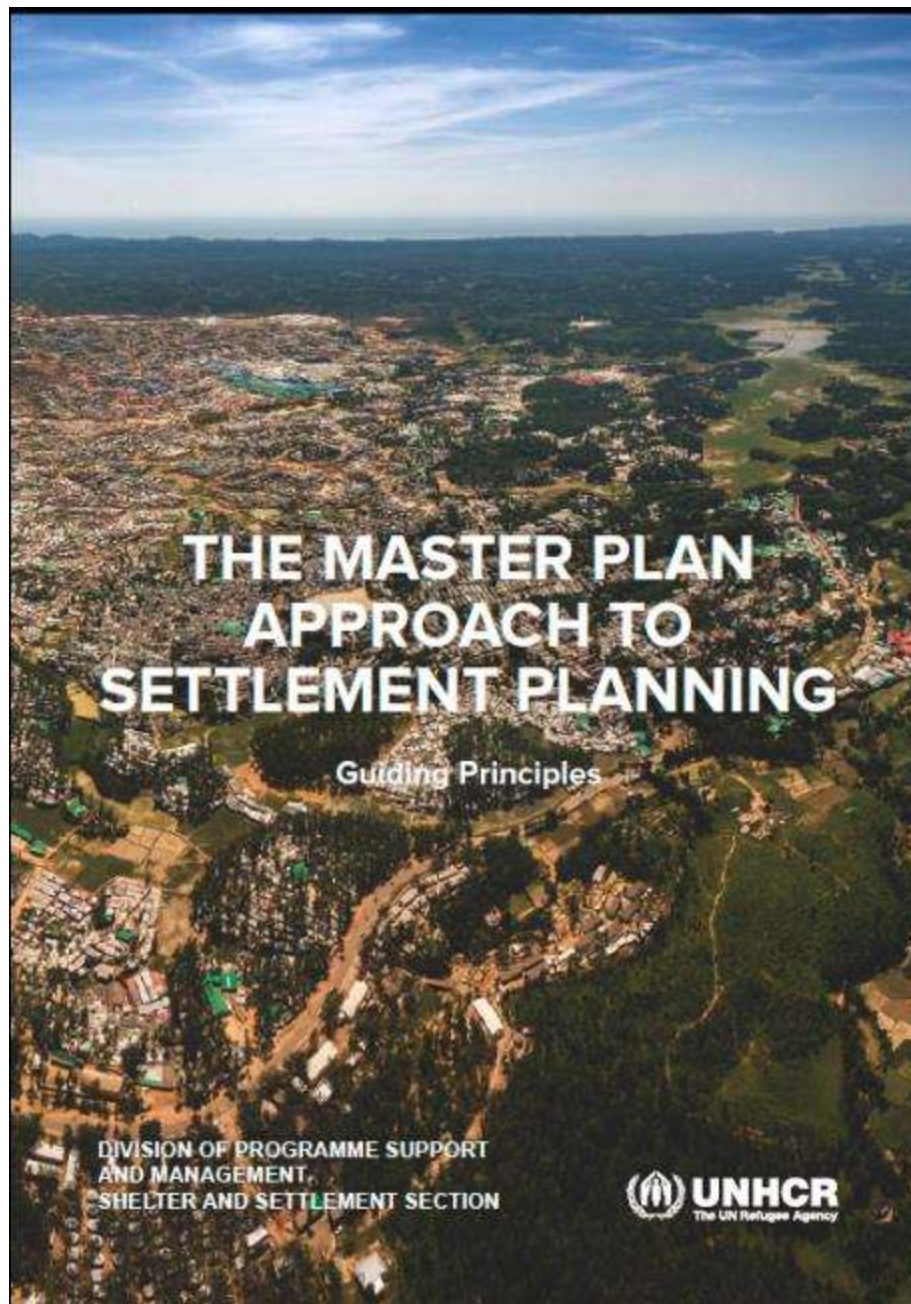
European Crisis, 2015



REFUGEE SETTLEMENTS

- Camp and Out of Camp
- Urban: Specific Challenges

PRACTICAL GUIDANCE



PART TWO: GUIDING PRINCIPLES 12

Spatial planning scales 12

- PRINCIPLE 1** National legislation, policies & plans provide a framework for settlement design 14
- PRINCIPLE 2** Environmental considerations drive design 17
- PRINCIPLE 3** Defining site carrying capacity 20
- PRINCIPLE 4** Decisions about density must be taken in context 23
- PRINCIPLE 5** Supporting safe and equitable access to basic services 25
- PRINCIPLE 6** Providing an enabling environment for livelihoods and economic inclusion 28
- PRINCIPLE 7** Addressing housing, land and property issues through an incremental tenure approach 31
- PRINCIPLE 8** Defining localised critical design drivers 34
- PRINCIPLE 9** Follow natural contours in the design of road and drainage infrastructure 37
- PRINCIPLE 10** Finalizing the settlement layout 39

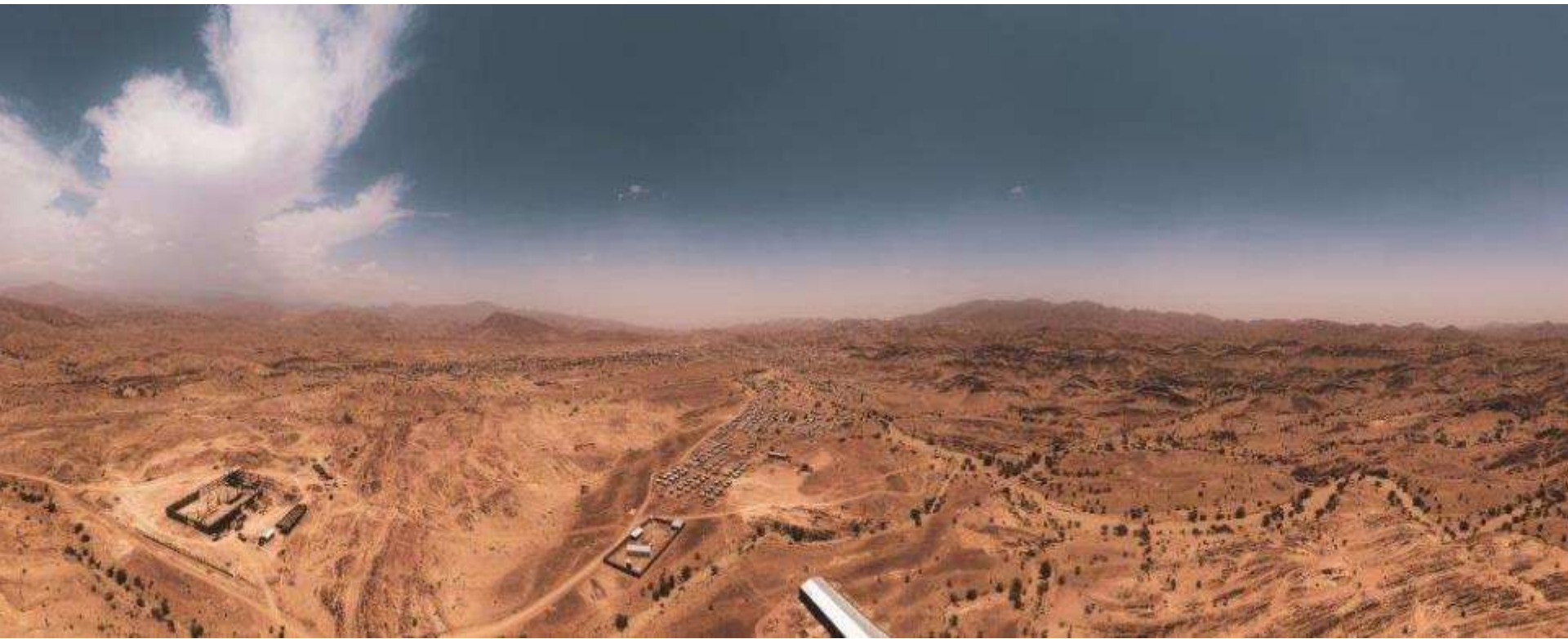
Ethiopia: camp-based settlements

Key Data:

- 678,000 refugees
- 3.2M IDPs
- Mostly rural (settlements, towns)
- S. Sudan, Somali, Eritrean, Yemeni

Approach:

- Assessment of 23 settlements in Gambela & Jijiga
- Consolidation, decommissioning and upgrading: economic realities
- Design & infra, social & business development
- Incorporation into political and civil administrative system



Berhale, Ethiopia



Dolo Ado, Ethiopia: protracted emergency damage



Awbarre, Ethiopia



Tierkidi, Gambela, Ethiopia



Kebribeyah, Ethiopia



Shimelbah, Ethiopia

Urban Shelter and Settlement Guidelines



1. **Good governance, legislation and policies** (SDGs 9, 11, 16, 17)
2. **Data for evidence-based response** (SDGs 4, 8, 9, 11)
3. **Age, Gender, Diversity and Human Rights** (SDGs 1, 3, 5, 8, 10, 16)
4. **Public space networks** (SDGs 9, 10, 11)
5. **Urban basic services and Energy** (SDGs 6, 7, 8, 9, 10, 11, 12)
6. **Housing, Land and Property rights** (SDGs 9, 11, 10, 16)
7. **Resilience and preparedness** (SDGs 10, 11, 13, 16)
8. **Municipal finance and socio-economic inclusion** (SDGs 1, 8, 9, 10, 11, 12)
9. **Shelter typologies and implementation** (SGDs 6, 7, 9, 10, 11)

Thank You!
Questions ?



UNHCR
The UN Refugee Agency