



Engineering Hope

Ana Ruiton

Engineering Hope Project Manager

Mott MacDonald



Engineering hope

A humane and sustainable
solution to the global
refugee crisis



Time for **action**

Correctly planned and designed, sustainable refugee settlements can bring huge benefits both to refugees, and to the countries that host them.

We are confident that, with participation from key players, we can begin the process of transforming the way refugees are housed, treated and perceived.

Engineering Hope report

Mott MacDonald

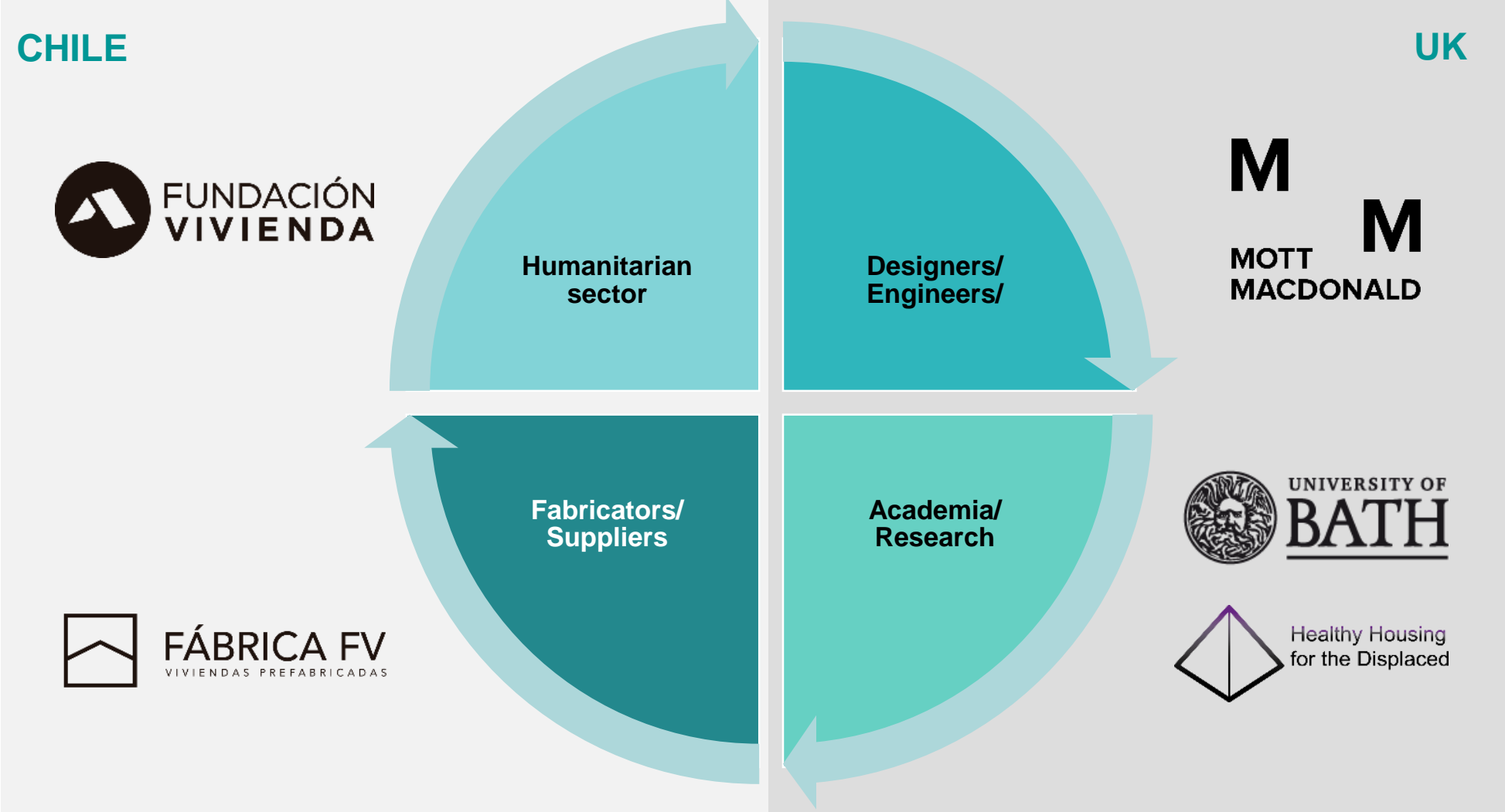


Healthy Housing for the Displaced

Temporary Shelter Design



Collaboration workflow





PROGRESIVA V2

2018

In partnership
with Mott
MacDonald

2017



PROGRESIVA

2017



2015



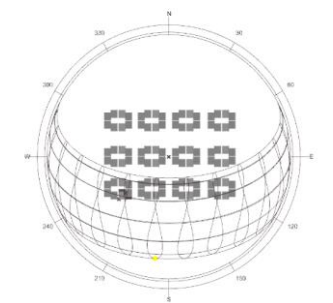
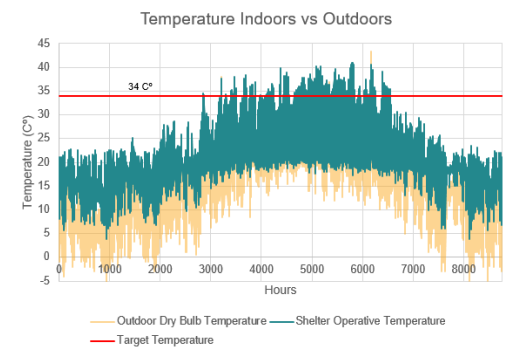
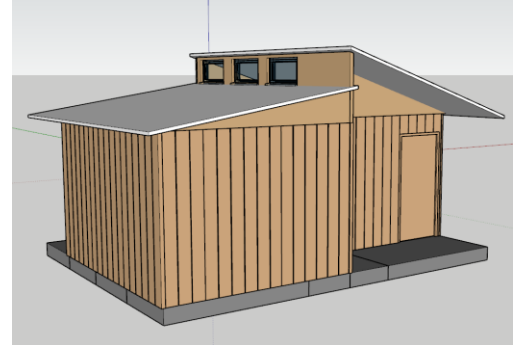
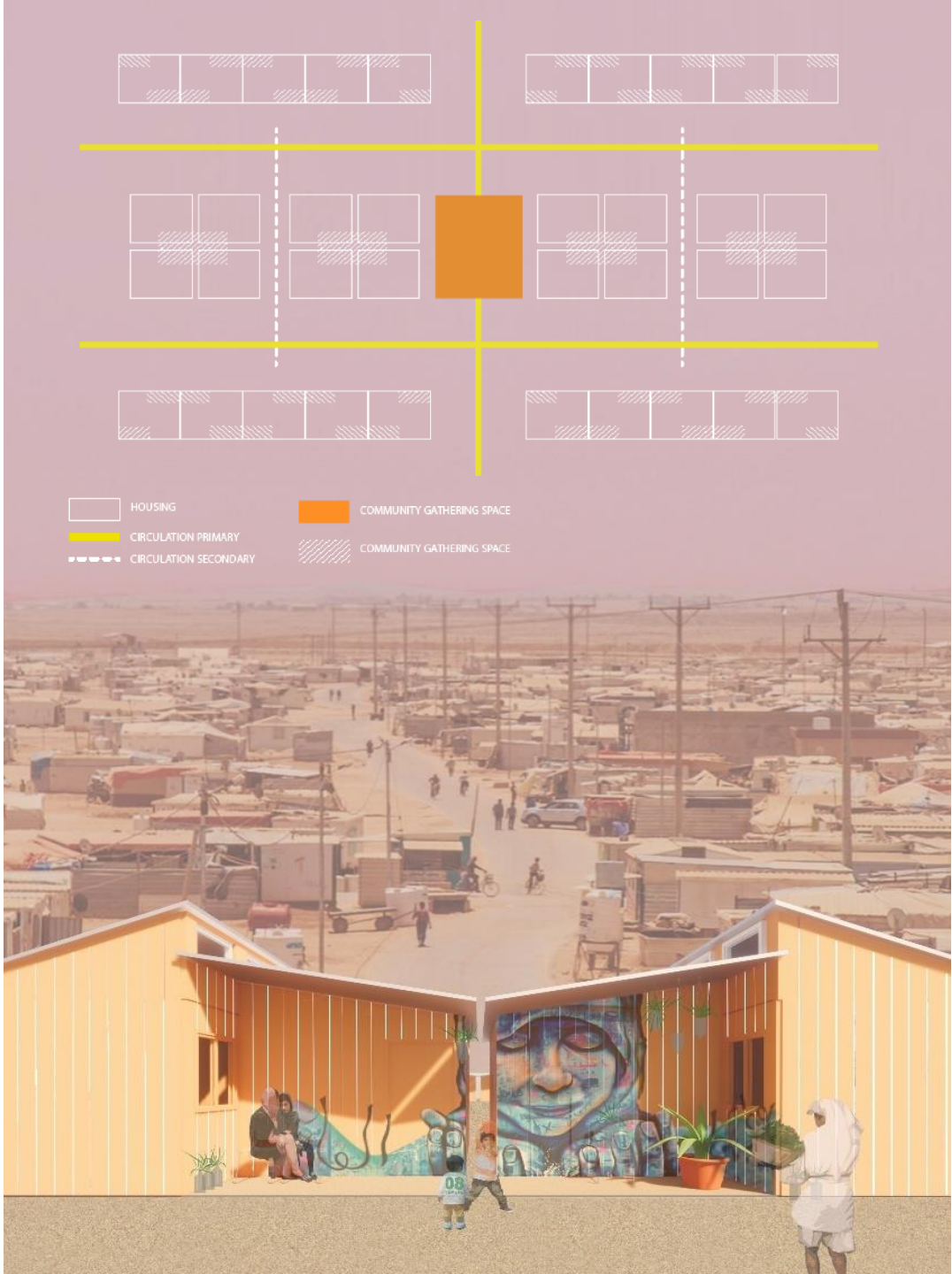
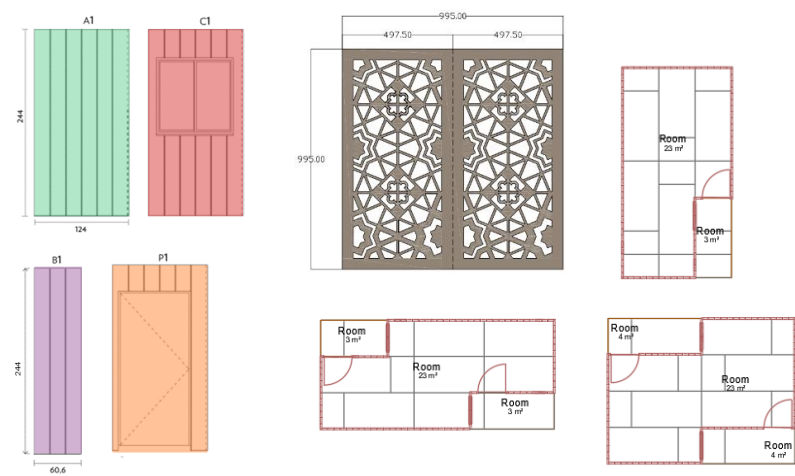
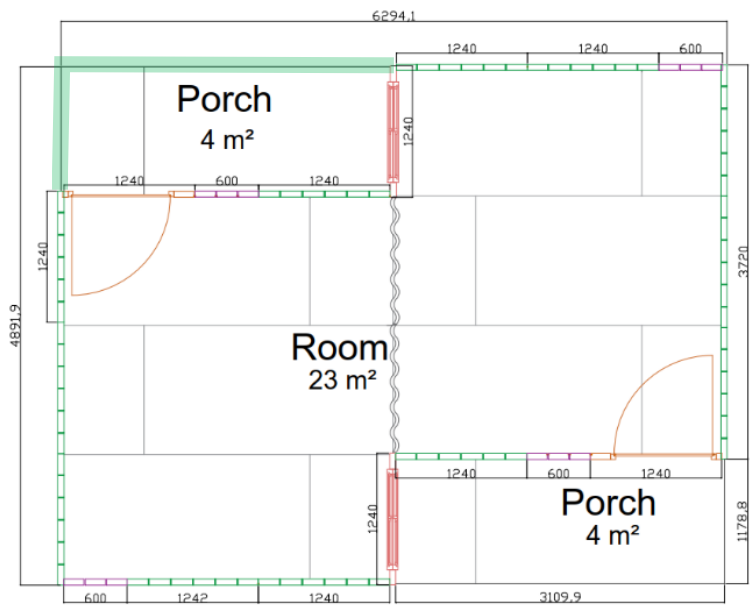
Until 2014



Evolution of FV emergency housing models

Design Improvement

PROGRESIVA SHELTER



PROGRESIVA V.2 - Buildability testing



FV Factory in Santiago, Chile – September 2018



Building Research Park, Swindon, UK – March 2019



A large teal geometric shape on the left side of the slide, consisting of a vertical rectangle with a diagonal cutout at the top right and a diagonal extension at the bottom right.

Places for people



Contact us:

If you would like to discuss the part your organisation can play, whether technical, social, economic or institutional, we would love to hear from you.

Search 'Mott MacDonald,
Engineering hope'

cities@mottmac.com

Ana.Ruiton@mottmac.com



Engineering
hope



A humane and sustainable
solution to the global
refugee crisis