

A Case for Working with the Green Sector

Rhys Jones
Humanitarian Landscape Collective



Make the case for working with landscape architects
when developing community resilience

Demonstrate our shared thinking when creating
sustainable landscapes



Egyptian Revolution 2011 (Al Jazeera)



Dig for Victory at the Albert Memorial, Kensington Gardens (Julia Makra/BBC News)



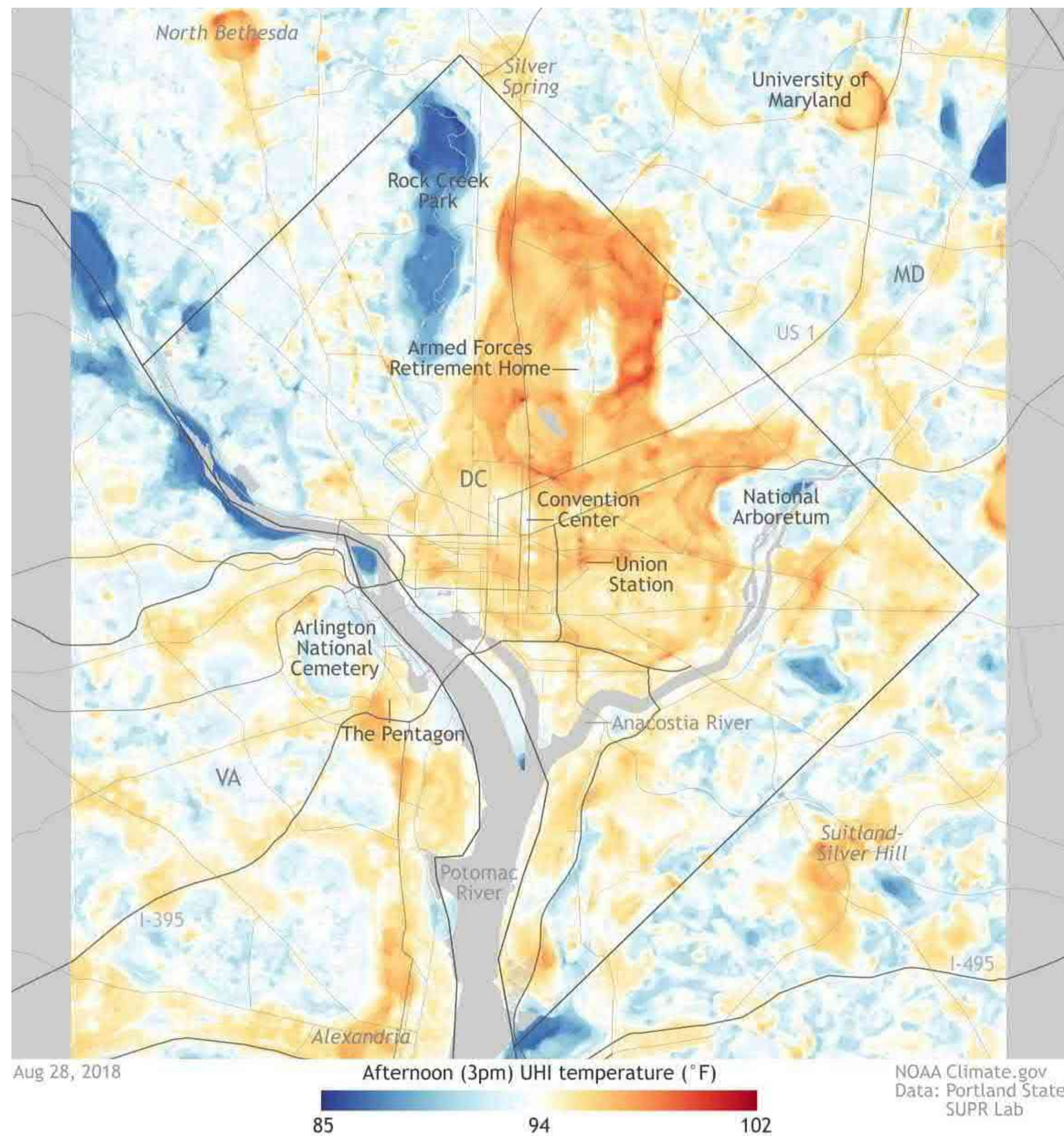
Dig for Victory at Richmond Athletic Ground (Hulton Archive/The Telegraph)



Open Air French Classes, Paris (Refugees Welcome in Parks)



Kitchen From a Conflict Zone (Refugees Welcome in Parks)



Urban Heat Island effect, Washington DC (Washington Post)



Flooding in Houston post-Hurricane Harvey (Forbes)



The Dalieh of Raouche (Lebanon in a Picture)



Horsh Beirut (Beirut.com)

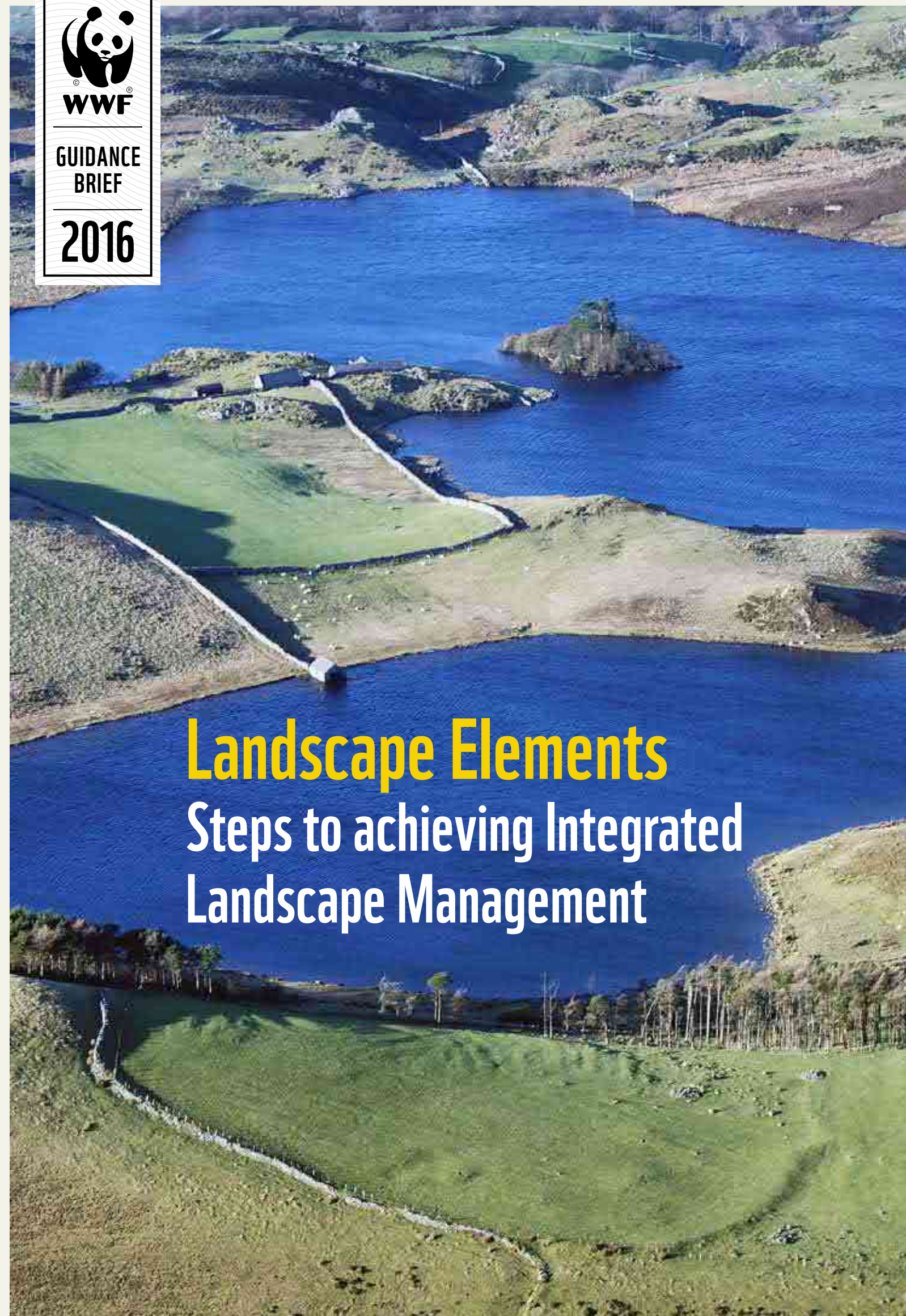
“A way of managing the landscape that involves collaboration among multiple stakeholders, with the purpose of achieving sustainable landscapes”

- 1 Establishing a multi-stakeholder platform
- 2 Building shared understanding
- 3 Collaborative planning
- 4 Effective implementation
- 5 Monitoring for adaptive management and accountability



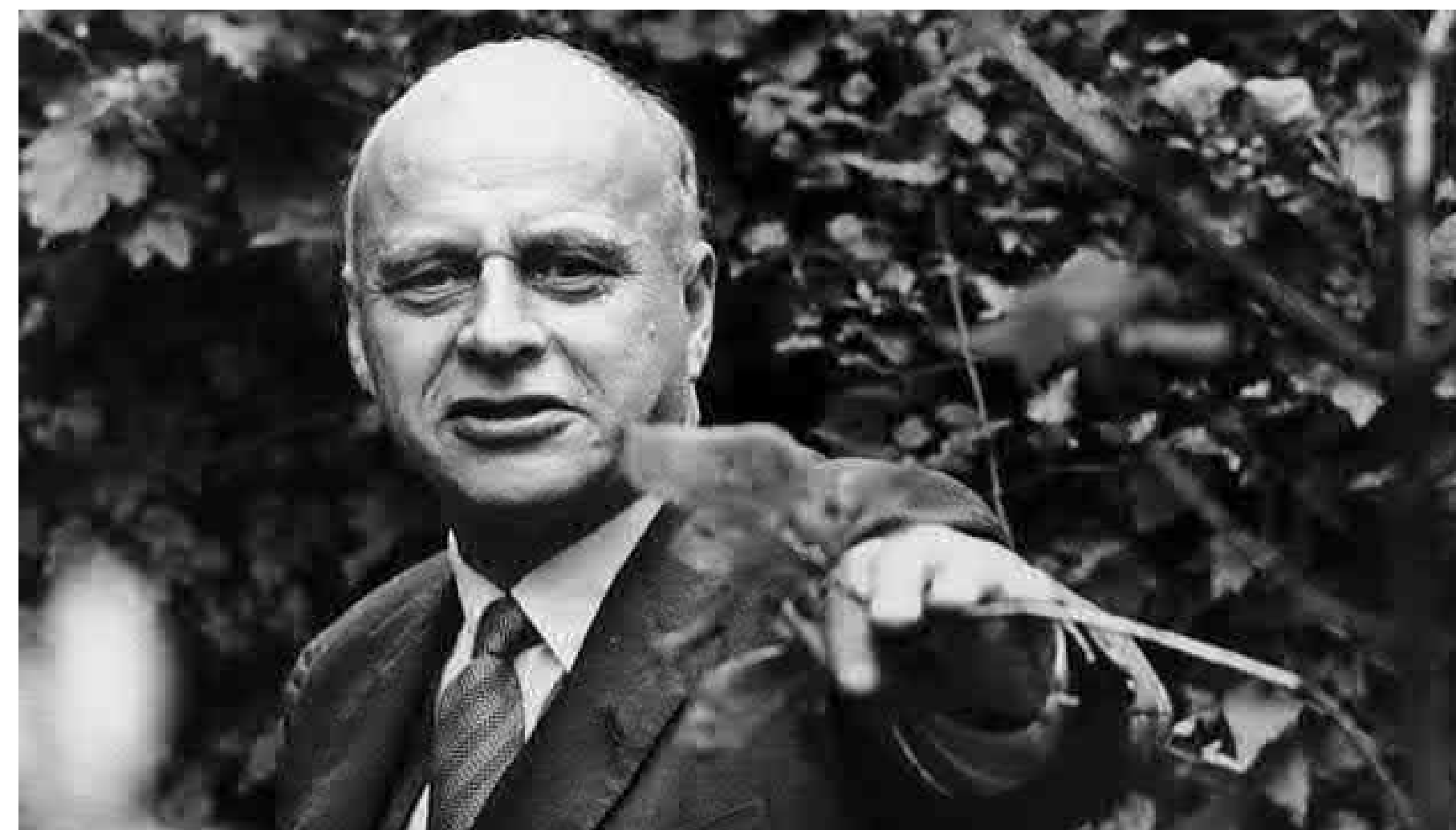
GUIDANCE
BRIEF

2016



Landscape Elements

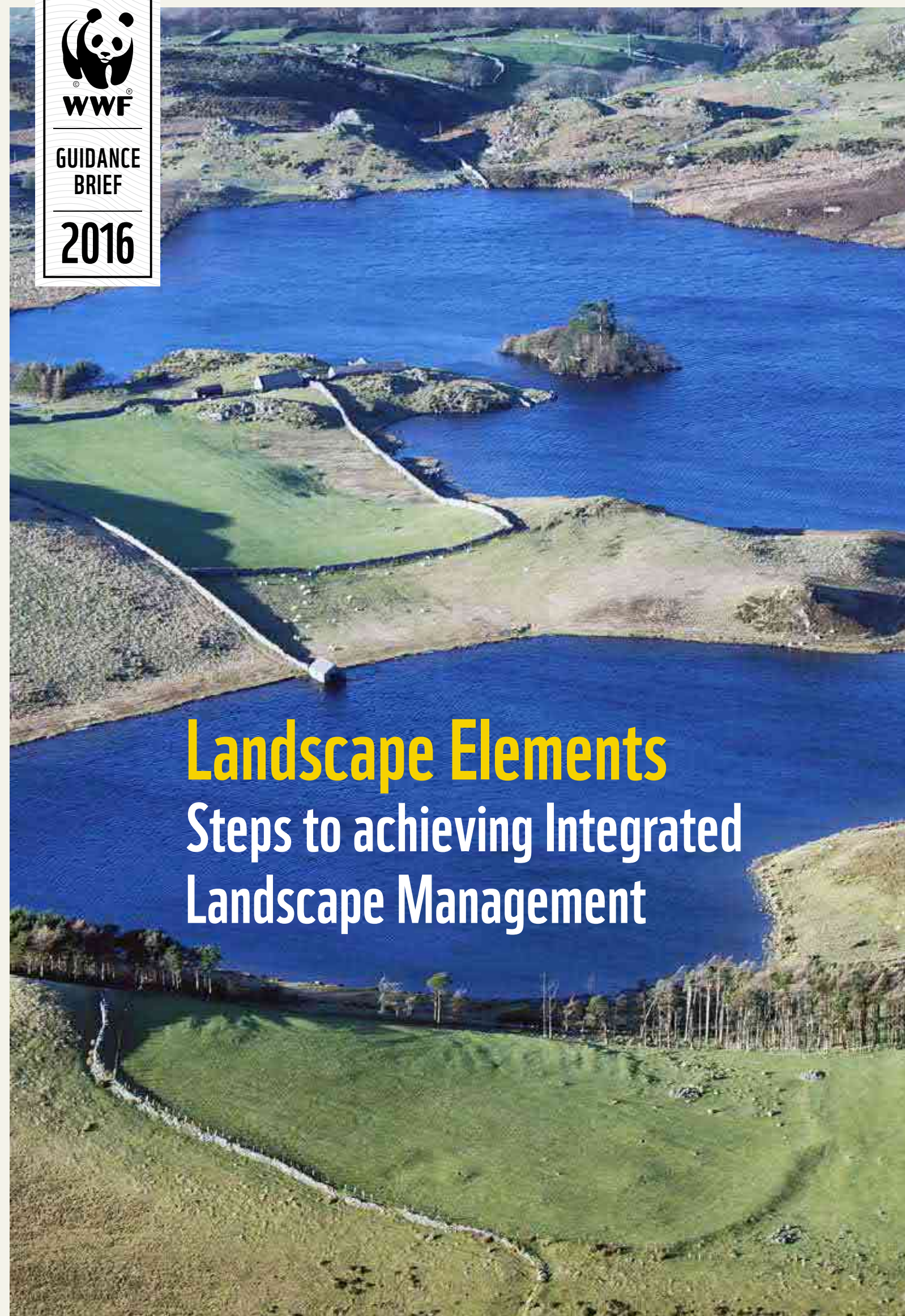
Steps to achieving Integrated
Landscape Management





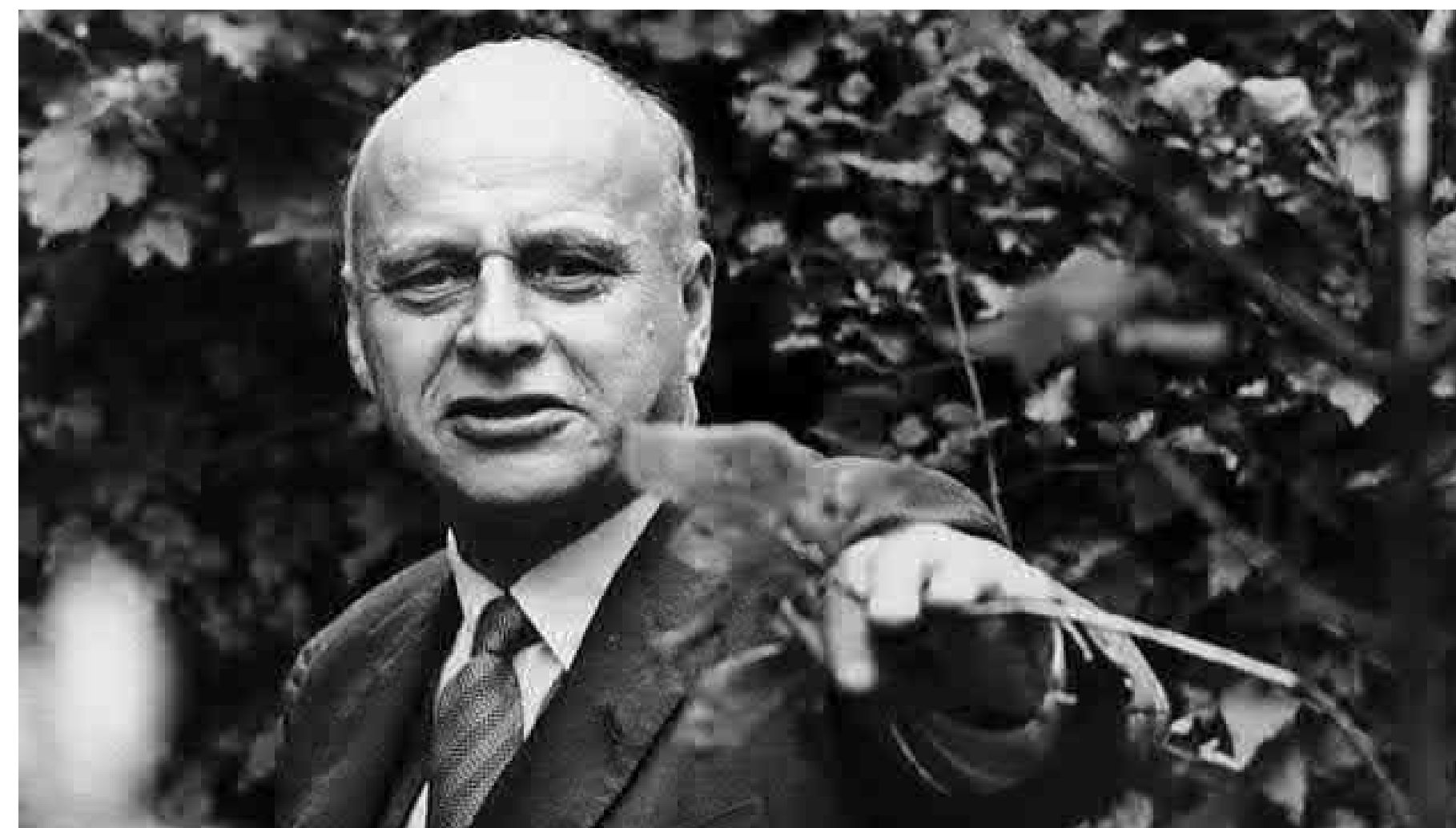
GUIDANCE
BRIEF

2016



Landscape Elements

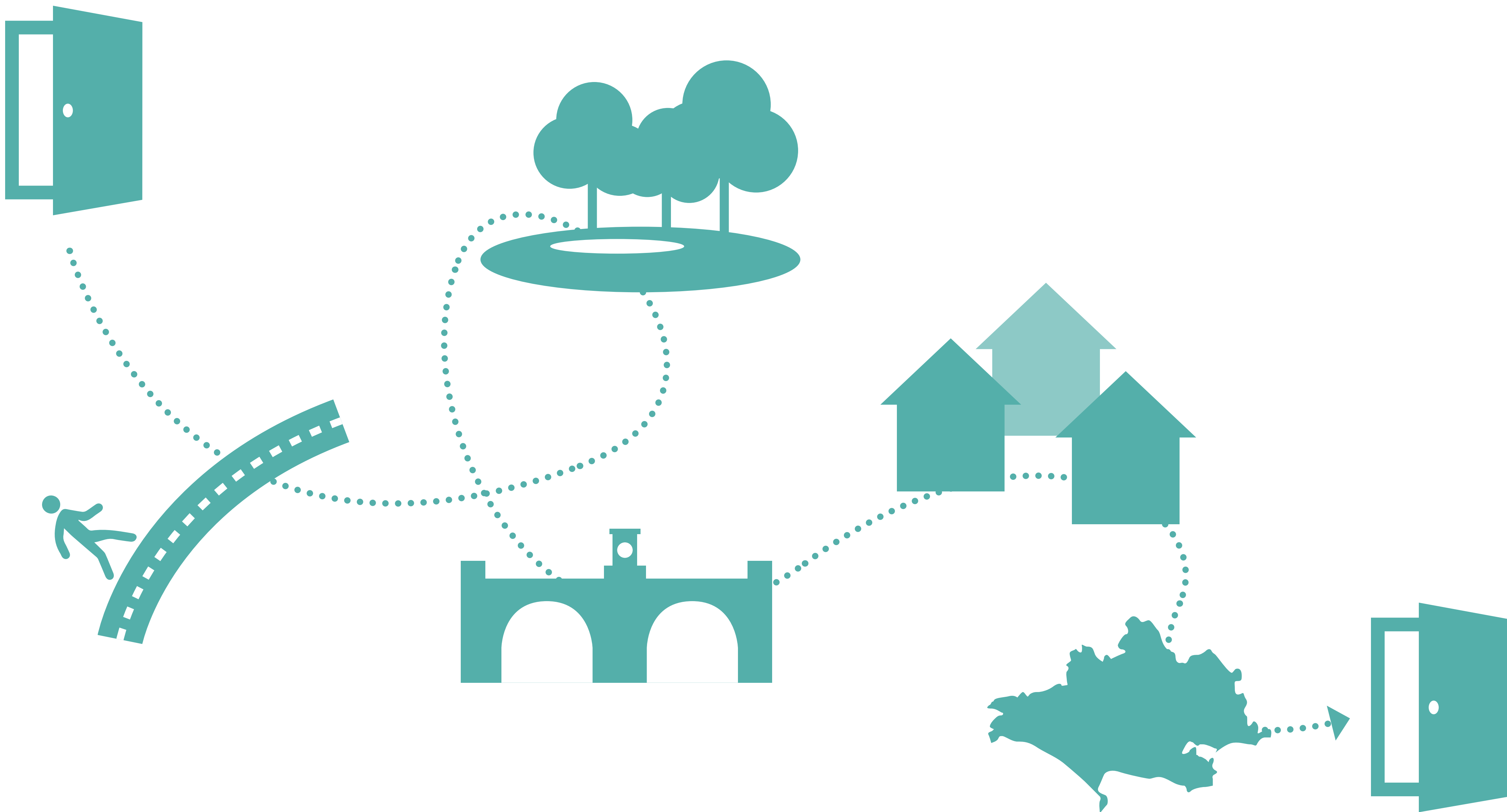
Steps to achieving Integrated
Landscape Management





Alan Titchmarsh (The Telegraph)

“Protect, conserve and enhance the natural and built environment for the benefit of the public”



Integrated Landscape Management

- 1 Establishing a multi-stakeholder platform
- 2 Building shared understanding
- 3 Collaborative planning
- 4 Effective implementation
- 5 Monitoring for adaptive management and accountability

Landscape Architecture

- 1 Project team
- 2 Project brief
- 3 Design of spaces to achieve environmental, social and economical benefits
- 4 Effective implementation
- 5 Management plans



Earthquake damage, Port-au-Prince (MIT News)



Tapis Rouge, Port-au-Prince (EVA Studio)



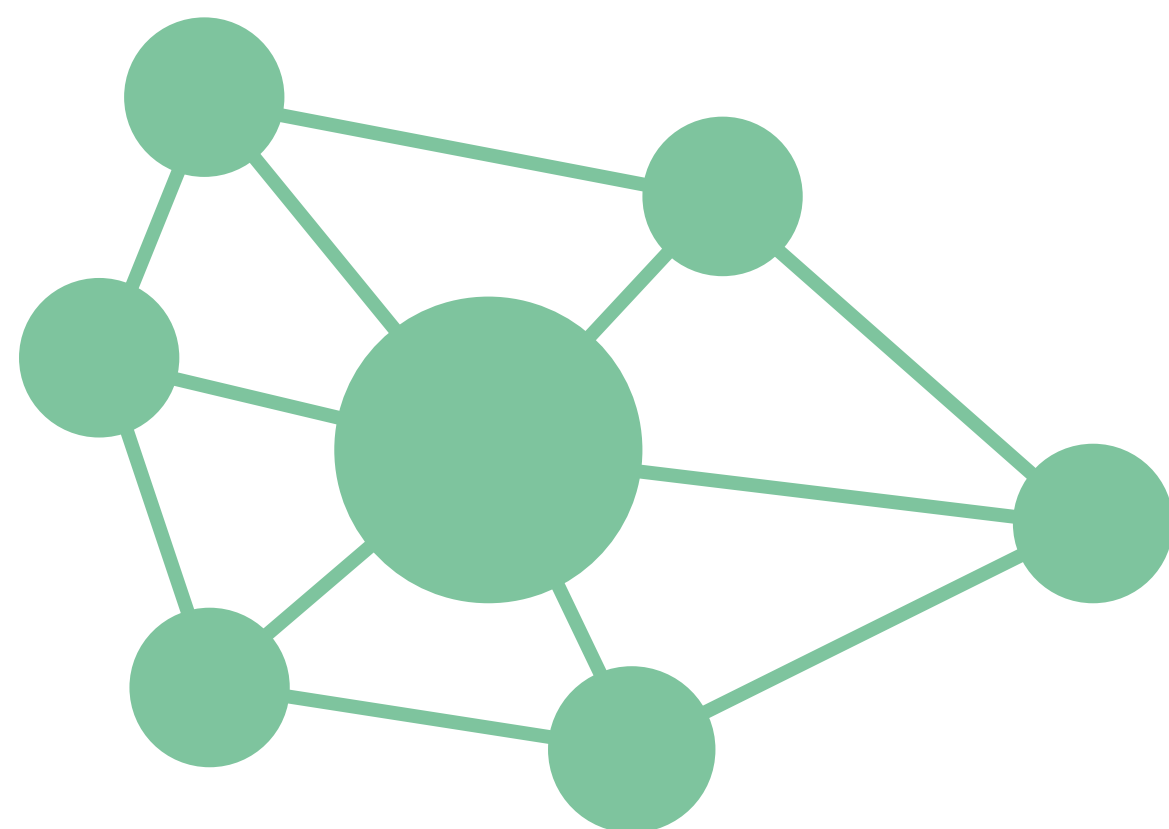


Tapis Rouge, Port-au-Prince (EVA Studio)

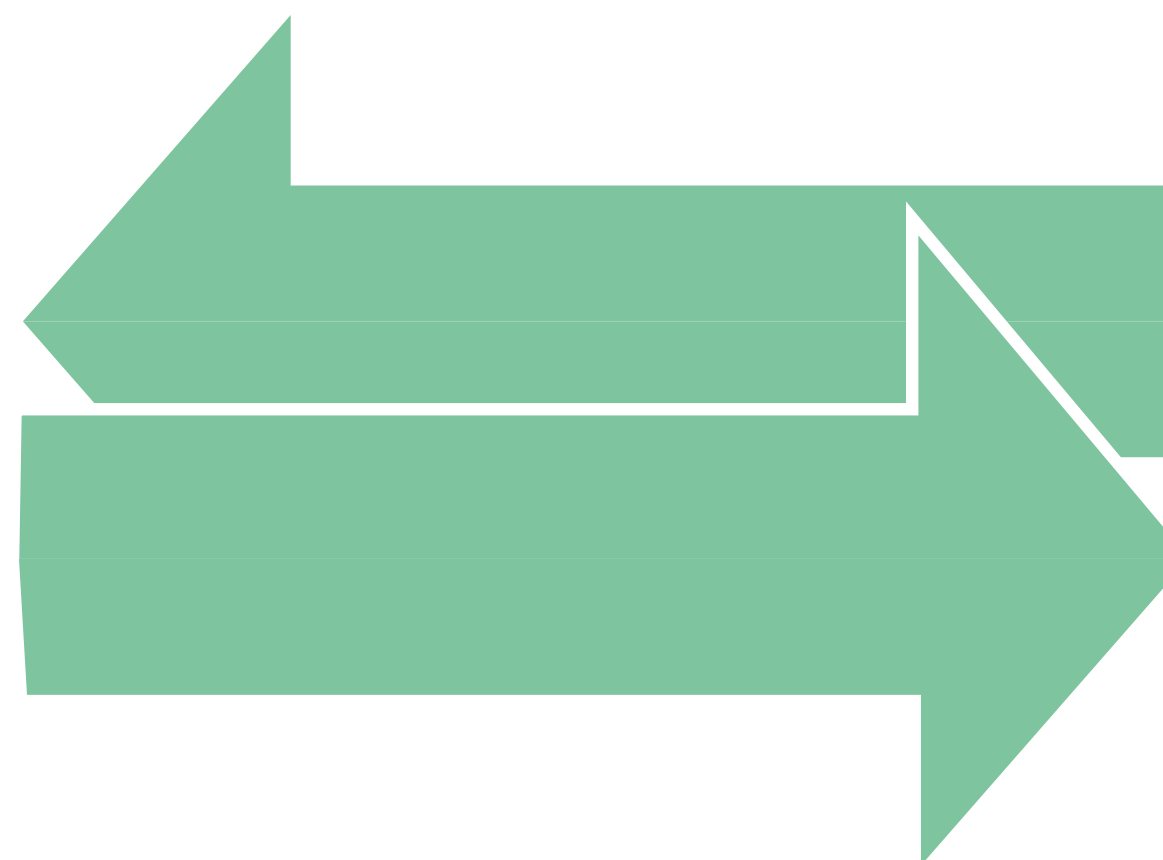
- 1 Establishing a multi-stakeholder platform
- 2 Building shared understanding
- 3 Collaborative planning
- 4 Effective implementation
- 5 Monitoring for adaptive management and accountability



**Humanitarian
Landscape
Collective**



Link-up



Share knowledge



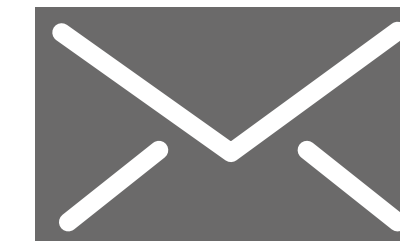
Research



@Humanitarian_LC



**Humanitarian
Landscape Collective**



rhysjones.la@gmail.com