

*What does the shelter sector need, to have more confidence to respond in urban areas?*

## Work *with* the city

Seki Hirano

[seki.hirano@crs.org](mailto:seki.hirano@crs.org)

senior technical advisor shelter and settlements

UK shelter forum Sept 2013

Partnership

Assessments

Monitoring Evaluation and Learning  
(MEAL)

Settlement

Public services

Livelihoods

Food Security

Density

Protection


Shelter and housing

Targeting and Coordination


Resilience

## National government - laws and regulations

**Congressmen**



Rep. Jose Benjamin A. Benaldo  
Congressman , 1st District




Rufus B. Rodriguez  
Congressman , 2nd District

**Mayor**



Vicente Y. Emano  
Mayor

**Vice Mayor**




Caesar Ian E. Acenas  
Vice Mayor

## City administration


## Directory of City Government

- OFFICE CITY MAYOR CITY**
- PUBLIC LIBRARY TOURISM & CULTURAL COMMUNITY AFFAIRS
- COMMUNITY IMPMT
- CITY ADMINISTRATOR**
- HUMAN RESOURCE PLANNING & DEVT. BUDGET**
- ACCOUNTING OFFICE**
- GENERAL SERVICE
- LEGAL OFFICE**
- INFORMATION OFFICE TREASURER'S**
- OFFICE ASSESSOR'S OFFICE CIVIL REGISTRAR
- SOCIAL WELFARE**
- ENGINEERING OFFICE**
- AGRICULTURAL VETERINARY OFFICE
- ECONOMIC ENTERPRISE
- HEALTH DEPT. BORJA CITY HOSPITAL**
- CITY BUILDING OFFICE EQUIPMENT DEPOT**
- PUBLIC SERVICES ANGGUNIANG SEC. CITY
- AUDITOR GOVERNMENT DIR.
- POPULATION PROG. FIRE DEPARTMENT POLICE**

**Congressmen**




Rep. Jose Benjamin A. Benaldo  
Congressman, 1st District




Rufus B. Rodriguez  
Congressman, 2nd District

**Mayor**



Vicente Y. Emano  
Mayor

**Vice Mayor**



Caesar Ian E. Acenas  
Vice Mayor

**Elections**

**Local government liaison officer**  
– who understands city  
development and politics

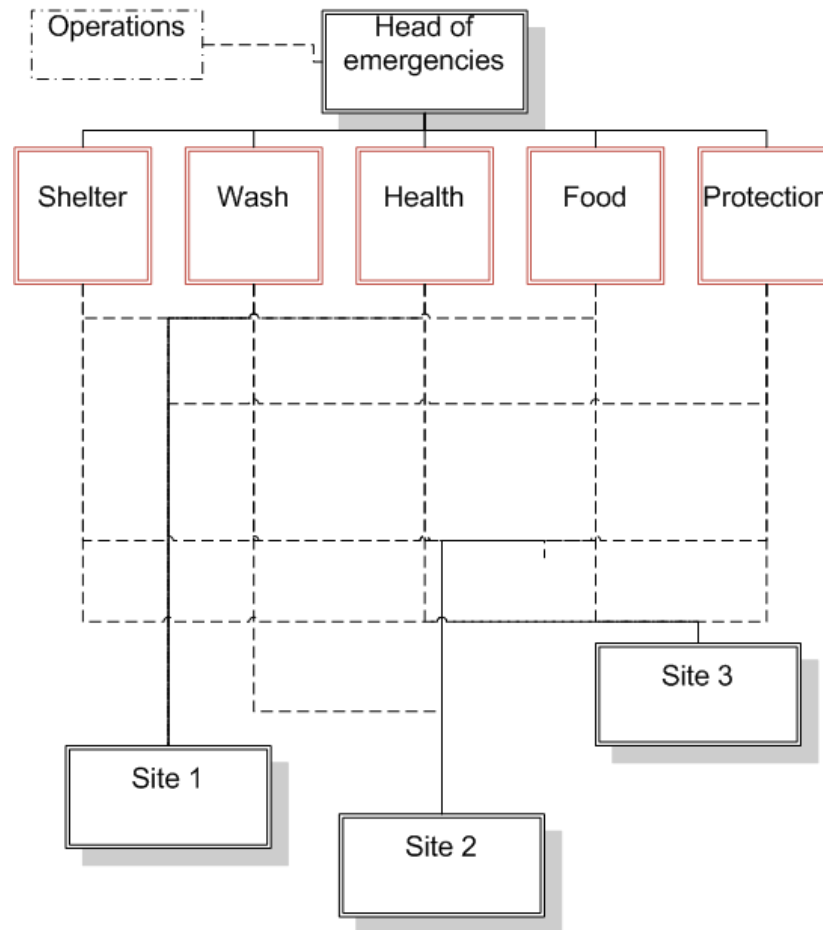




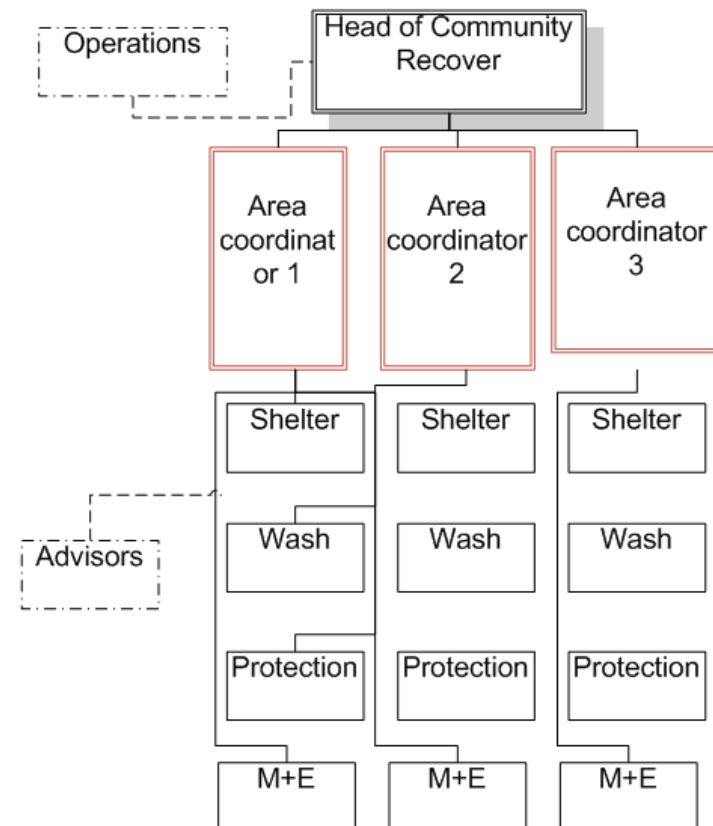
## Understanding the informal sector



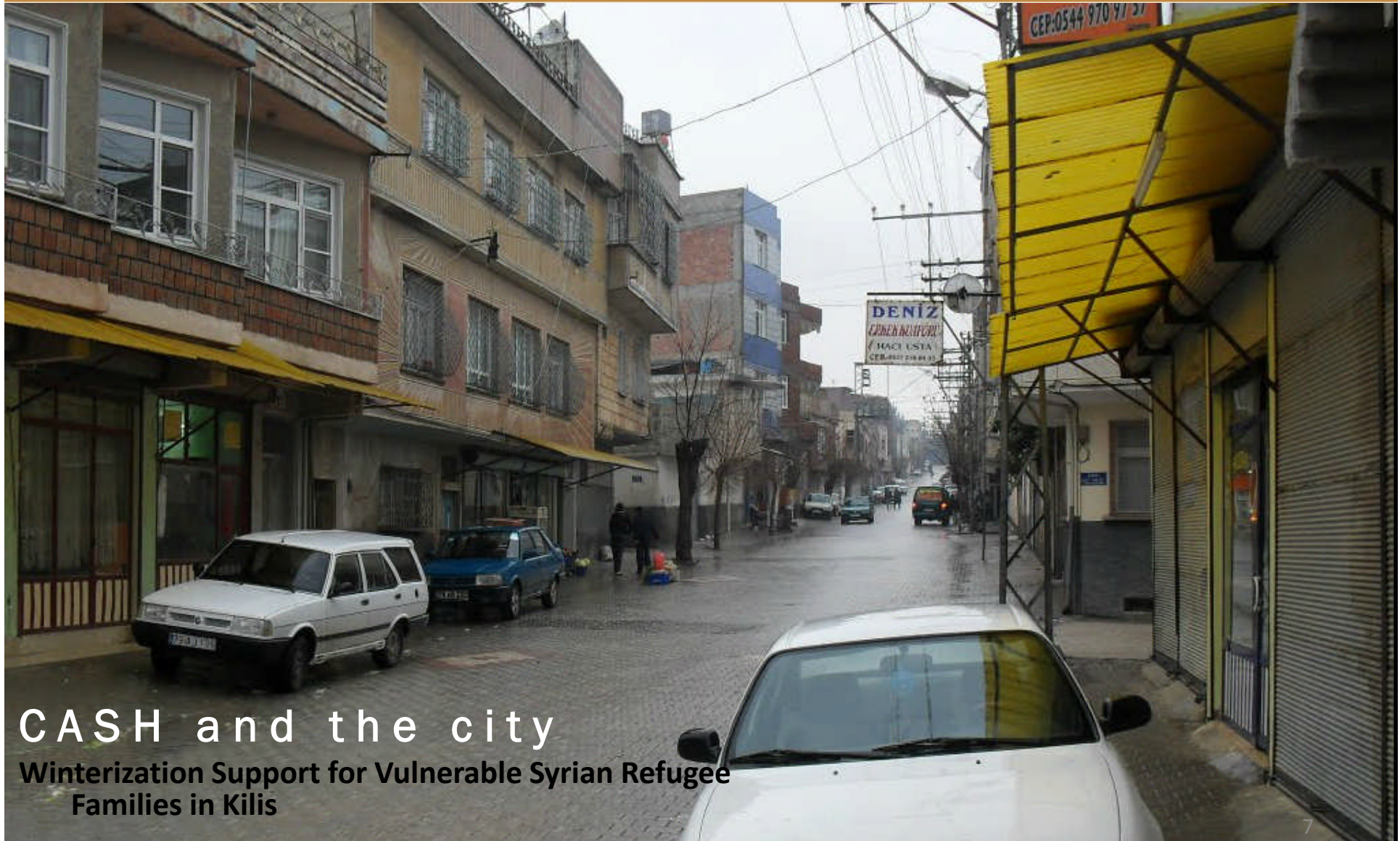
## Sectorial approach



## Integrated neighborhood approach







## CASH and the city

Winterization Support for Vulnerable Syrian Refugee  
Families in Kilis



- Would we be effective if we work **with** the city in getting it back on its feet?
- Working with the city means we make conscious effort to work with the existing city structures including the informal structures together with all level of stakeholders – city officials, private sector, CBO to household.
- **How did you work with the city?**
- **Did you have to adapt the way you operate?**
- **Did you blend in...?**